

Literacy

- Holiday news
- **Text:** Lost and Found.
- Describing the main story settings, events and characters.
- Winter facts
- Winter shape poems
- Segmenting and blending
- Read words and simple sentences.
- Penguin fact file.



Expressive Arts and Design

- Self portraits.
- Nursery rhymes
- Bird feeders
- Junk modelling.



Understanding the World

- Chinese New Year.
- Valentine's Day.
- Exploring ice and cold weather
- Ice and Snow
- Winter animals
- Penguins
- Birds



Reception Spring 1 2022 Curriculum Map

Winter Wonderland

This half term Reception children will be learning about these topics. This overview will help you support your child with their learning.



Physical Development

- Weekly PE sessions
- Developing fine motor skills during funky fingers.
- Developing gross motor skills outside.
- Pencil control-letter formation.
- Using scissors appropriately.



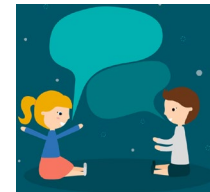
Mathematics

- Composition of numbers to 5, 6, 7 and 8.
- Comparing mass and capacity.
- 1 more and 1 less
- Combining 2 groups (addition)
- Comparing height/length/
- Time
- Days of the week.

1 2 3 4 5
6 7 8 9 0

Communication and Language

- Retelling stories
- Role play
- Innovating stories.
- Superhero challenges
- New vocabulary
- Class discussions
- Small group discussions.



PSED

Dream and Goals

- Overcoming challenges
- Celebrating achievements.

